

# Runyes<sup>®</sup> 3DS

3D Oral Scanner



*Perfect your clinic!*

**Runyes<sup>®</sup>**  
FOCUS ON DENTAL

# Runyes<sup>®</sup> 3DS

Gives You The New Way of  
Intraoral Scanning

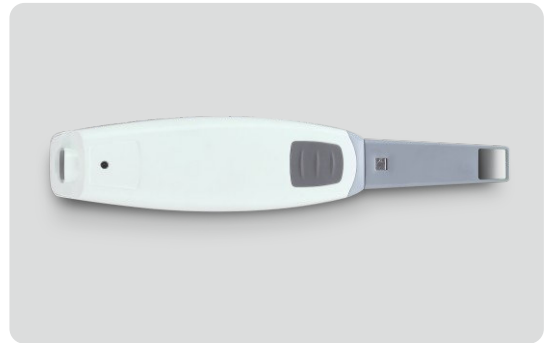


# Our Strength

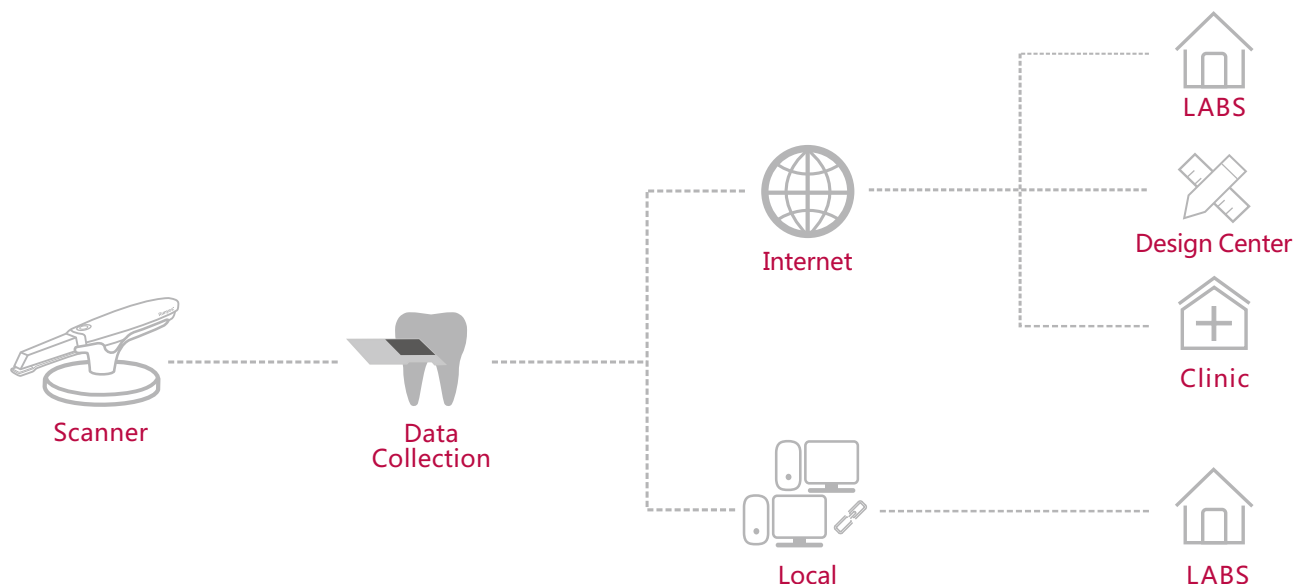
Compared with traditional impression technology, 3DS has the advantages of efficiency, accuracy and stability.

Applied to soft tissue perfect scanning effect, its capable range includes digital repair, digitization of orthodontic, such as digital oral health records in various fields.

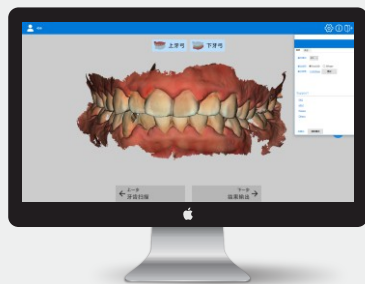
Impress your patients with efficient, stable, and accurate real-color impressions. It completes digital oral data and improve the precision of the final restoration. 3DS makes scanning efficient and simple for dentists and assistants ensuring optimal comfort for patients and reduced treatment time.



# Choose Your Workflow Figure



# Applied Range



OUT PUT



3SHAPE



EXO CAD

Open data  
Applied to various design software, EXOCAD, 3Shape  
Choose the output shaft direction, better adopt with  
the design software.

# Advantage of Image Capturing

Easy and simple operation in hand

- Holding as pen type operation, Image capturing unit support multi - Angle flexible transformation.
- Fast and easy scanning of the posterior teeth area.
- Built-in integrated anti-fogging design, automatically heating to the appropriate temperature, the image unit is not fogged by the complicated situation in the mouth, and the data of the mouth scan is precise and clear.
- It can be used to display the real-time synchronized image video mode, which can help to control the position of the image, and make it more comprehensive and accurate.



<b>Runyes® 3DS</b>	
Scanner size	240x49.5x30.5mm
Scanner weight	210g
Image capture technology	Optical continuous video collection
Operation Distance	0-17mm
Scan accuracy	20um
Imaging mode	Synchronous 3D video
Quick reset	yes
Model optimization	yes
Export file	STL, PLY (true color)
Operating time	>30000 hrs

Revision: 201803

Runyes reserves the right to make modifications without prior notice.



**Runyes Medical Instrument Co.,Ltd.**

Add:No. 456, Tonghui Road, Jiangbei Investment & Pioneering Park C, Ningbo,China

Tel:+86-574-27709922 Fax:+86-574-27709923 [Http://en.runyes.com](http://en.runyes.com) E-mail:[runyes@runyes.com](mailto:runyes@runyes.com)