

xrddental



More Efficient



More Convenient



More Safer

Portable Dental X-Ray Unit XRD RAY98 (P) 70 kV - 2 mA

Diagnosis through high-resolution imaging

A true high frequency portable dental x-ray machine, ensures less radiation for the patient and operator. The x-ray tube with small 0.4 mm focal spot, allow superior image and with better definition.

Compact, lightweight and one- hand operated

Long lasting battery technology. Hundreds of exposures with the same charge.

The unit provide the highest degree of safety for both operator and patient, complying with international quality and radiological safety standards.

xrddental

Portable Dental X-Ray Unit RAY98 (P)

- The portable x-ray is 70kvp and 2mA
- The XRD RAY98 (P) provides clear radiographs with reduced time of exposition
- Compact, lightweight and one- hand operated
- Compatible with film, PSP plate systems and Dental Sensors
- CANON™ X-Ray Tube, with 0.4mm Focal Spot



Wide digital color display

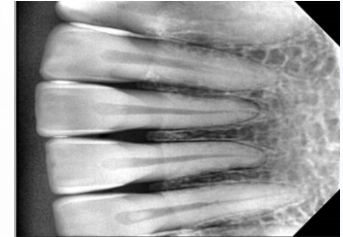
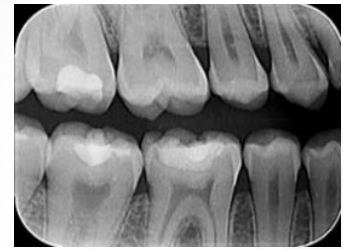
Pre selected times for easier operation



Equipped with long cone for the correct use and positioning



Totally safe against leakage radiation



Best image quality for the best diagnosis

RAY98 (P) X-Ray Characteristics

Charge Input Voltage	100 V ~ 240 V
Frequency	50/60 Hz
Total Weight	5.2 lbs
X-Ray Tube	CANON D-045
X-Ray Focal Spot	0.4mm
Anode Angle	12.5°
X-Ray Tube Voltage	70KV±10%
Anode Current	2mA±20%
Duty Cycle	1:30
Time of Exposure	0.04S ~ 1.00S
Leakage Radiation	1meter≤0.25mGy/h



Sales, Warranty and Repairs
by XRD Dental

xrddental
www.xrddental.com

XRD Dental Equipment
7575 Kingspointe Pkwy - Suite 19
Orlando FL 32836
(407) 319-1348 - info@xrddental.com